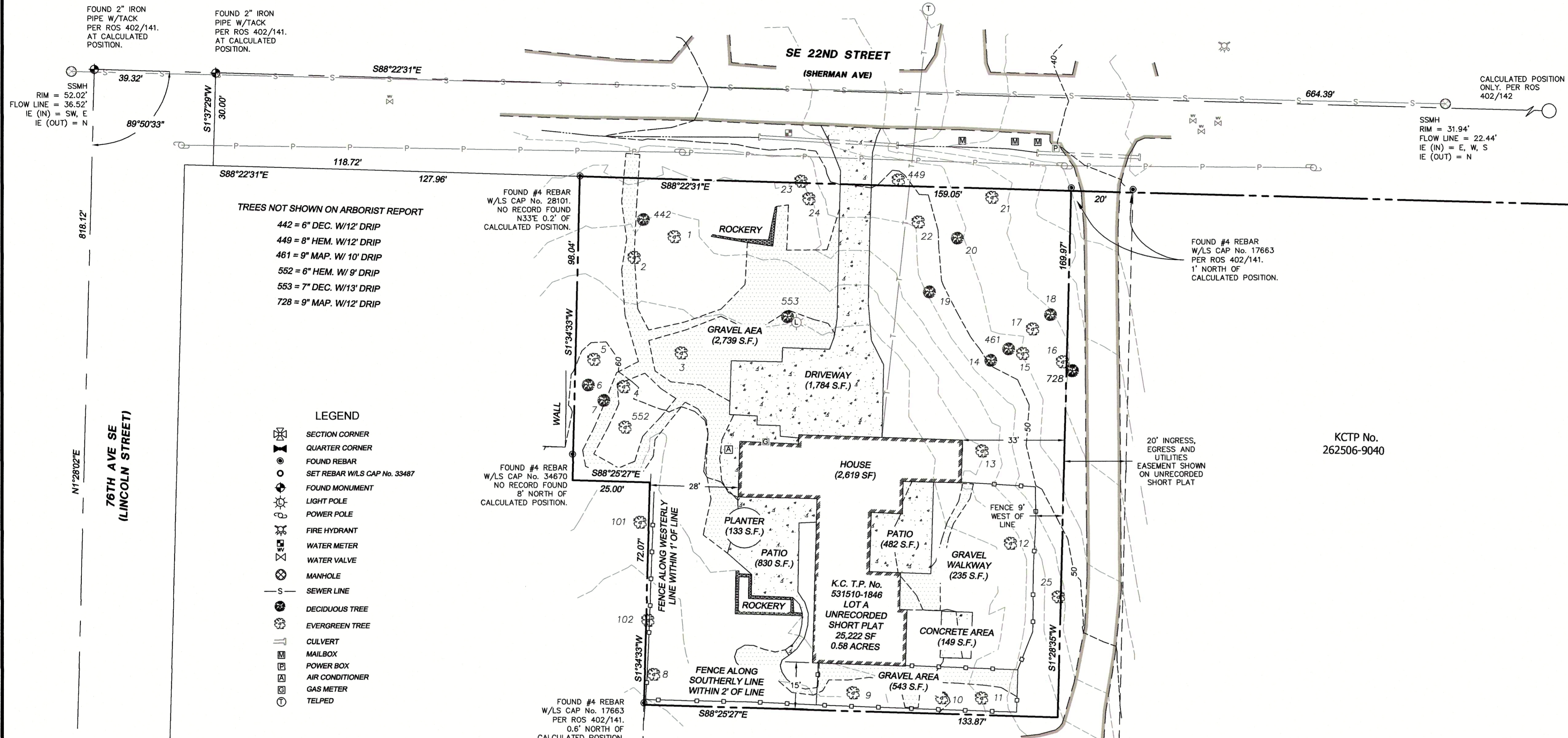


REVISIONS	BY	DATE

PRELIMINARY TOPO

MILESTONE

ENGINEERS - SURVEYORS EASTSIDE CONSULTANTS, INC.
 1320 N.W. WALL ST., SUITE B
 SEASIDE, WASHINGTON 98072
 PH: (206) 328-3351 FAX: (206) 328-3378



- TREES NOT SHOWN ON ARBORIST REPORT
- 442 = 6" DEC. W/12' DRIP
 - 449 = 8" HEM. W/12' DRIP
 - 461 = 9" MAP. W/ 10' DRIP
 - 552 = 6" HEM. W/ 9' DRIP
 - 553 = 7" DEC. W/13' DRIP
 - 728 = 9" MAP. W/12' DRIP

- LEGEND
- SECTION CORNER
 - QUARTER CORNER
 - FOUND REBAR
 - SET REBAR W/LS CAP No. 33487
 - FOUND MONUMENT
 - LIGHT POLE
 - POWER POLE
 - FIRE HYDRANT
 - WATER METER
 - WATER VALVE
 - MANHOLE
 - SEWER LINE
 - DECIDUOUS TREE
 - EVERGREEN TREE
 - CULVERT
 - MAILBOX
 - POWER BOX
 - AIR CONDITIONER
 - GAS METER
 - TELPED

Tree Tag	Species Common	Species Scientific	DBH (inches)	Height (feet)	Direction				Condition	Exceptional yes/no	Comments	Proposal
					N	S	E	W				
1	Douglas fir	<i>Pseudotsuga menziesii</i>	28	113	8	15	10	16	Fair-good	No	topped in past, crook, regenerated top, cambial rupture	TBD
2	Douglas fir	<i>Pseudotsuga menziesii</i>	30	120	12	12	15	12	Fair-good	Yes	topped in past	TBD
3	Deodar cedar	<i>Cedrus deodara</i>	23	96	10	17	20	6	Good	No	asymmetric crown to southeast	TBD
4	Douglas fir	<i>Pseudotsuga menziesii</i>	18	79	7	12	13	0	Fair	No	asymmetric crown, somewhat suppressed	TBD
5	Douglas fir	<i>Pseudotsuga menziesii</i>	40	116	17	16	16	18	Good	Yes	topped in past	TBD
6	Bigleaf maple	<i>Acer macrophyllum</i>	18	30	14	12	0	18	Fair	No	trunk forks at 4 feet, asymmetric crown to west	TBD
7	Scoulers willow	<i>Salix scouleriana</i>	9	32	2	11	6	4	Fair-poor	Yes	decay at root crown, suppressed	TBD
8	Douglas fir	<i>Pseudotsuga menziesii</i>	26	93	13	16	17	14	Fair-good	No	large crook, large exposed surface roots, good vigor	TBD
9	Deodar cedar	<i>Cedrus deodara</i>	11	44	12	10	10	10	Good	No	young, no concerns	TBD
10	Deodar cedar	<i>Cedrus deodara</i>	12	45	11	10	10	11	Good	No	young, no concerns	TBD
11	Deodar cedar	<i>Cedrus deodara</i>	12	46	10	10	11	9	Good	No 1	young, no concerns	TBD
12	Western red cedar	<i>Thuja plicata</i>	29	70	14	14	16	16	Good	No	exposed surface roots, good vigor	TBD
13	Douglas fir	<i>Pseudotsuga menziesii</i>	38	101	16	15	15	13	Fair-good	Yes	topped in past, large cambial rupture, 4 feet to house	TBD
14	Bigleaf maple	<i>Acer macrophyllum</i>	18	60	6	18	8	14	Fair	No	asymmetric crown to south	TBD
15	Douglas fir	<i>Pseudotsuga menziesii</i>	21	95	6	11	6	10	Fair	No	natural lean south, topped in east	TBD
16	Douglas fir	<i>Pseudotsuga menziesii</i>	27	62	7	12	12	5	Fair	No	broken top, small crown	TBD
17	Douglas fir	<i>Pseudotsuga menziesii</i>	26	103	14	8	12	8	Fair	No	topped in past, crook, regenerated top	TBD
18	Bigleaf maple	<i>Acer macrophyllum</i>	9.7 (11)	51	12	8	14	6	Fair	No	poor taper, some dead cambium on 12 inch stem	TBD
19	Horse chestnut	<i>Aesculus hippocastanum</i>	14	47	15	12	8	16	Fair-good	No	decent form	TBD
20	Bigleaf maple	<i>Acer macrophyllum</i>	12.9, 8 (17)	61	12	4	18	8	Fair	No	somewhat suppressed	TBD
21	Douglas fir	<i>Pseudotsuga menziesii</i>	19	86	7	7	9	7	Fair	No	narrow crown, large cambial rupture	TBD
22	Douglas fir	<i>Pseudotsuga menziesii</i>	40	94	16	15	16	17	Fair-good	Yes	topped in past, crook, regenerated top	TBD
23	shore pine	<i>Pinus contorta</i>	22	65	10	16	10	11	Fair	Yes	forked tops	TBD
24	Western red cedar	<i>Thuja plicata</i>	10	20	8	12	10	10	Fair	No	suppressed, under pine	TBD
25	Douglas fir	<i>Pseudotsuga menziesii</i>	30	118	10	13	16	12	Fair-good	Yes	topped in past, good vigor	TBD
NEIGHBORING TREES												
101	Western red cedar	<i>Thuja plicata</i>	32	88	2	NA	12	NA	Fair-good	Yes	sparse top foliage, sound	Protect
102	Western red cedar	<i>Thuja plicata</i>	13	45	8	10	10	NA	Good	No	close to fence, good vigor	Protect

S. 1/4 S. 1 FOUND 3.5" BRASS CAP W/PUNCH & LS No. 32429 PER ROS 402/141. AT CALCULATED POSITION.

